



**PREPARED FOR**

**REYANSH BHUTRA  
(GRADE 10TH)  
TEST CODE : BQJ8APIXZU33**

# INTRODUCTION

HI REYANSH BHUTRA,

We are as excited as you to see your fitment results.

We base our results on the assessment of the following traits -

1

**INTEREST** Based on the popular and widely used Holland theory which assesses individuals and careers from among six types; the recommendations are based on a Person to Environment fit.

2

**ABILITIES** Focuses on self assessment of a wide array of cognitive, psychomotor and physical abilities which helps an individual accomplish a wide range of career tasks effectively.

3

**WORKSTYLE/PERSONALITY** Based on personality traits that are critical for work and are identified in various personality tests like Five Factor Model/Big 5, Hogan, CPI etc.

Your career recommendations presented further are determined based on the above assessed traits and mapped to clusters and pathways which are described below -

**CLUSTER:** Career Clusters contains jobs requiring similar skills. In total there are 16 clusters and your top matches from them are presented.

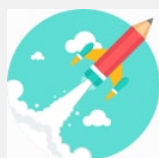
**PATHWAY:** Different Career Clusters are further categorized into pathways and your top recommendations also include fitment in these pathways.



# SUMMARY OF RESULTS

Given below a summary of your Recommended career clusters, most suited pathways and a summary of your assessment results.

## TOP RECOMMENDED CLUSTERS



### EDUCATION AND TRAINING

1. Teaching/Training



### SCIENCE, TECHNOLOGY, ENGINEERING AND MATHEMATICS

1. Science and Math



### HUMAN SERVICES

1. Counseling and Mental Health Services
2. Family and Community Services

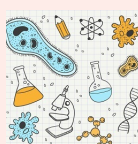
## RECOMMENDED STREAMS\*



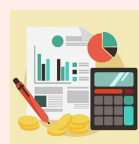
### HUMANITIES



### SCIENCE (MATHS)



### SCIENCE (BIOLOGY)



### COMMERCE

\* : Streams suggested based on your top recommended cluster.

## ASSESSMENT RESULTS (TOP3)

### INTEREST

- Investigative
- Enterprising
- Social

### ABILITIES

- Quantitative Abilities
- Spatial Abilities
- Psychomotor Abilities

### WORKSTYLE/PERSONALITY

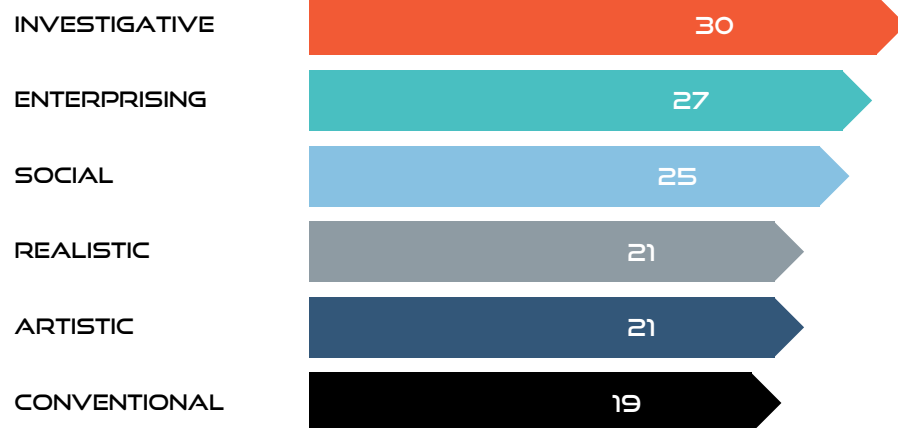
- Conscientiousness
- Practical Intelligence
- Adjustment

For any further guidance and clarifications contact us

8469149288 | [nimish@careernaksha.com](mailto:nimish@careernaksha.com)

# INTEREST ASSESSMENT RESULTS

The assessment of interests is based on Holland's theory. The theory states that people and the careers can be classified into a combination of six interest types and a good match leads to satisfaction, persistence and success. The types identified are Realistic, Investigative, Artistic, Social, Enterprising and Conventional and the results from your assessment are mentioned below



## TOP 3 INTEREST AREAS

01

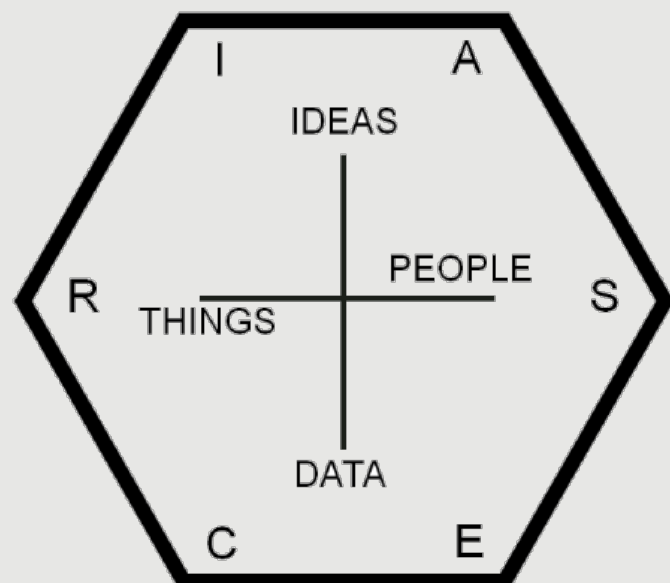
INVESTIGATIVE

02


ENTERPRISING

03

SOCIAL

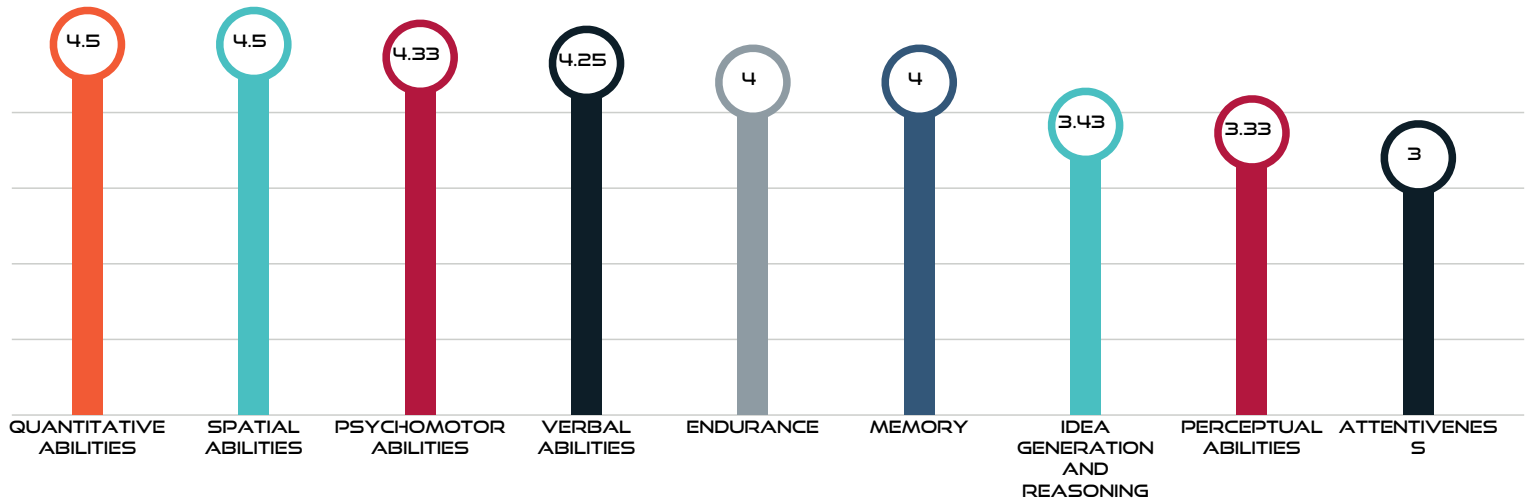


Given below the characteristic and typical interests and abilities for the six interest types -

INTEREST TYPE	INTEREST & ABILITIES	TYPICAL TRAITS
 <b>R - REALISTIC</b>	<ul style="list-style-type: none"> <li>• Like outdoor activities, building things and operating machines</li> <li>• Good at jobs requiring mechanical and athletic abilities</li> </ul>	<ul style="list-style-type: none"> <li>• Practical, frank, focused, persistent and action oriented</li> <li>• Asocial, traditional, uninvolved and inflexible.</li> </ul>
 <b>I - INVESTIGATIVE</b>	<ul style="list-style-type: none"> <li>• Like to watch, learn, analyze, design and solve problems.</li> <li>• Good at math, science, research and data analysis jobs.</li> </ul>	<ul style="list-style-type: none"> <li>• Curious, analytical, independent, creators &amp; unconventional</li> <li>• Work alone and thinkers</li> </ul>
 <b>A - ARTISTIC</b>	<ul style="list-style-type: none"> <li>• Like to work in unstructured situations and come up creative solutions</li> <li>• Good at language, literature, performing (theater or music) and visual arts</li> </ul>	<ul style="list-style-type: none"> <li>• Imaginative, expressive, innovative, original and sensitive</li> <li>• Disorderly, impulsive and non conforming</li> </ul>
 <b>S - SOCIAL</b>	<ul style="list-style-type: none"> <li>• Like to work with people and are interested in helping others</li> <li>• Good public speakers, enjoy training, instructing, counseling or curing others</li> </ul>	<ul style="list-style-type: none"> <li>• Trustworthy, cooperative, religious, outgoing and sensitive</li> <li>• Idealistic</li> </ul>
 <b>E - ENTERPRISING</b>	<ul style="list-style-type: none"> <li>• Like to work with other people</li> <li>• Good at influencing, leading, motivating, persuading and performing.</li> </ul>	<ul style="list-style-type: none"> <li>• Ambitious, adventurous, optimistic, social and self confident</li> <li>• Domineering and talkative</li> </ul>
 <b>C - CONVENTIONAL</b>	<ul style="list-style-type: none"> <li>• Like to work with data and in structured situations</li> <li>• Good at designing new processes, working with numbers, organizing and following rules and procedures</li> </ul>	<ul style="list-style-type: none"> <li>• Careful, efficient, systematic and diligent</li> <li>• Thrifty</li> </ul>

# ABILITIES ASSESSMENT RESULTS

Abilities are enduring capabilities to accomplish a wide range of tasks effectively and thus are critical to determine a persons capability match to a career and keep the employer satisfied.



## VERBAL ABILITY

Individuals ability to understand the meaning of words and use them effectively in good communication while speaking, listening or writing.

## IDEA GENERATION AND REASONING

Individuals ability to come up with original ideas, fluency of ideas, problem recognition, reasoning abilities, information ordering, processing and effective problem solving.

## QUANTITATIVE ABILITIES

Individuals ability to use math skills and logical thinking to solve problems in everyday situations. Also indicates ability to gather, sort and make sense of all information related to a problem and then being able to explain ones decision.

## MEMORY

Individuals ability to remember information such as words, numbers, pictures, and procedures.

## PERCEPTION SPEED

Individuals ability to acquire and organize visual information for objects , pictures and drawing. Also indicates ability to quickly identify patterns and accurately compare similarities and differences among sets of letters, numbers, objects, pictures, or patterns.

## SPATIAL ABILITY

Individuals ability to form pictures of objects in ones mind. It also involves easily understanding how drawings represent real objects and correctly imagining how parts fit together.

## ATTENTIVENESS

Individuals ability to concentrate on a task over a period of time without being distracted and to be able to shift back and forth between two or more activities or sources of information (such as speech, sounds, touch, or other sources).

## MOTOR COORDINATION

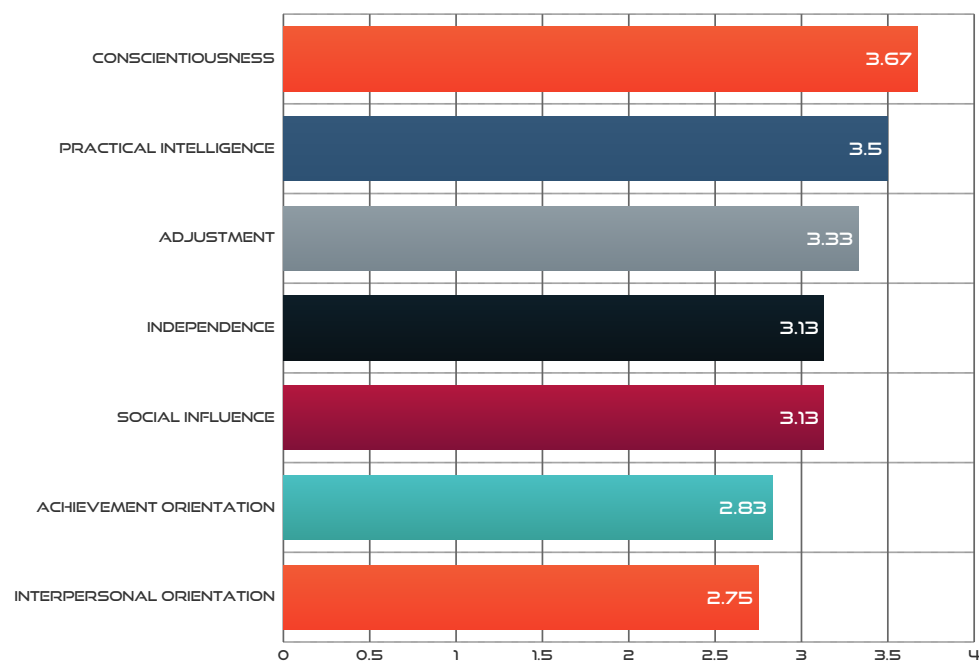
Individuals ability to quickly and accurately coordinate eyes with hands or fingers when making precise hand movements.

## ENDURANCE / STAMINA

Individuals ability to exert oneself physically over long periods of time without getting winded or out of breath.

# WORK STYLE ASSESSMENT RESULTS

Work Style represents personality, temperament and cognitive factors that influence a individuals work related aspects and as personality related research has shown it as a core human values with an application and validity across cultures. The work style measures are build utilizing constructs from multiple personality assessment models like Five Factor Model, Big 5, Hogan etc. Your results on the 7 broad dimensions are presented below .



## ACHIEVEMENT ORIENTATION

Indicates the level of personal goal setting , trying to succeed at the goals set, and striving to be competent in ones work and other endeavors.

## SOCIAL INFLUENCE

Indicates the level of an individuals impact on others and level of energy and leadership in their work and other situations.

## INTERPERSONAL ORIENTATION

Indicates the level of pleasantness, cooperation, sensitivity and ease to get along with others and a preference for associating and working with others.

## ADJUSTMENT

Indicates the level of maturity, poise, flexibility and restraint to cope with pressure stress, criticism, setbacks in handling personal and work related problems etc.

## CONSCIENTIOUSNESS

Indicates the level of dependability, commitment in doing a job correctly and carefully and being trustworthy, accountable and attentive to details.

## INDEPENDENCE

Indicates the level of independence and autonomous working, an own way of doing things, guiding oneself with little or no supervision and depending mainly on oneself to get a job done.

## PRACTICAL INTELLIGENCE

Indicates the level of capability to generate new ideas and thinking through things logically.

## RECOMMENDED CLUSTER # 1

### Education and Training

Careers in Education and training cluster involves guiding and training people. The pathways and occupations in this cluster are spread across administrative jobs, support activities, coaching and teaching. The opportunities in this cluster are in schools, undergraduate and post graduate colleges and universities as well as in industry for training professionals. In most countries this cluster provides the largest number of organized full time and part time jobs.



### TOP RECOMMENDED PATHWAYS



### POPULAR SUBJECT STREAMS

Humanities, Science (Maths), Science (Biology), Commerce

### POPULAR SUBJECT CHOICES

Languages / Literature, Social Studies, Sociology, Psychology, Philosophy, Mathematics, Science, Political Science, History, Multimedia and Web Technology, Physical Education

### EDUCATION CHOICES

Follow links below to know more about UG/PG courses and colleges-

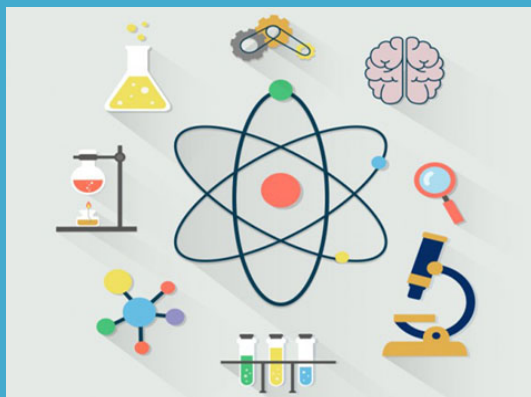
- Education
- Humanities & Social Science
- BBA/MBA



## RECOMMENDED CLUSTER # 2

### Science, Technology, Engineering and Mathematics

Careers in the Science, technology, engineering, and mathematics cluster involve working on scientific research and in planning and design products and systems. Pathways and occupations in this cluster involve diverse activities like overseeing the construction of roads and bridges, developing new systems and methods to prevent diseases, designing and conceptualizing new products and services. There are also workers in this cluster that provide support to the activities done by scientists, mathematicians, or engineers.



### TOP RECOMMENDED PATHWAYS

Science and Math

57.83%

Engineering and Technology

52.5%

### POPULAR SUBJECT STREAMS

Science (Maths), Science (Biology), Science (Maths & Biology)

### POPULAR SUBJECT CHOICES

Mathematics, Physics, Chemistry, Biology, Bio Engineering Graphics, Electronics / Computer Networking / Embedded , Technology Educations

### EDUCATION CHOICES

Follow links below to know more about UG/PG courses and colleges-

- Science
- Engineering
- BCA/MCA
- Education

## RECOMMENDED CLUSTER # 3

### Human Services

Careers in the Human services cluster help individuals and families meet their personal needs. As part of this cluster there are several pathways and occupations and these involve working in government offices, hospital, nonprofit organizations, hotels, or schools. Several individuals working in this cluster are also self - employed. Work in this cluster involve helping students with career and education choices, providing personal care and other services or providing counseling and support.



### TOP RECOMMENDED PATHWAYS



### POPULAR SUBJECT STREAMS

Humanities, Commerce

### POPULAR SUBJECT CHOICES

Languages / Literature, Sociology, Psychology, Philosophy, Home Science, Foreign Languages, Social Work , Physical Education

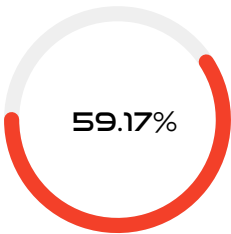
### EDUCATION CHOICES

Follow links below to know more about UG/PG courses and colleges-

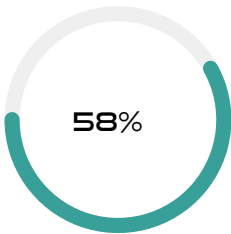
- Humanities & Social Science
- Tourism Hotel Management
- BBA/MBA
- Fine Arts

# OTHER RECOMMENDED PATHWAYS

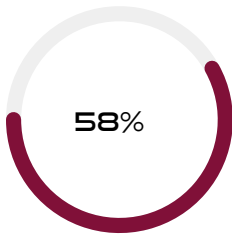
You can also explore these Clusters:Pathways



Cluster : Government and Public Administration  
Pathway : Planning



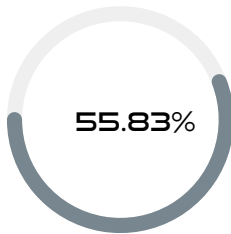
Cluster : Marketing, Sales and Service  
Pathway : Marketing Information Management and Research



Cluster : Health Science  
Pathway : Biotechnology Research and Development



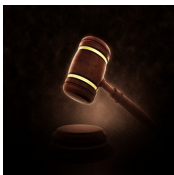
Cluster : Law, Public Safety, Corrections and Security  
Pathway : Legal Services



Cluster : Business, Management and Administration  
Pathway : Business Analysis

# RECOMMENDED INDUSTRIES

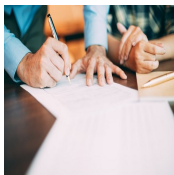
Explore these links for details of Industries



GOVERNMENT



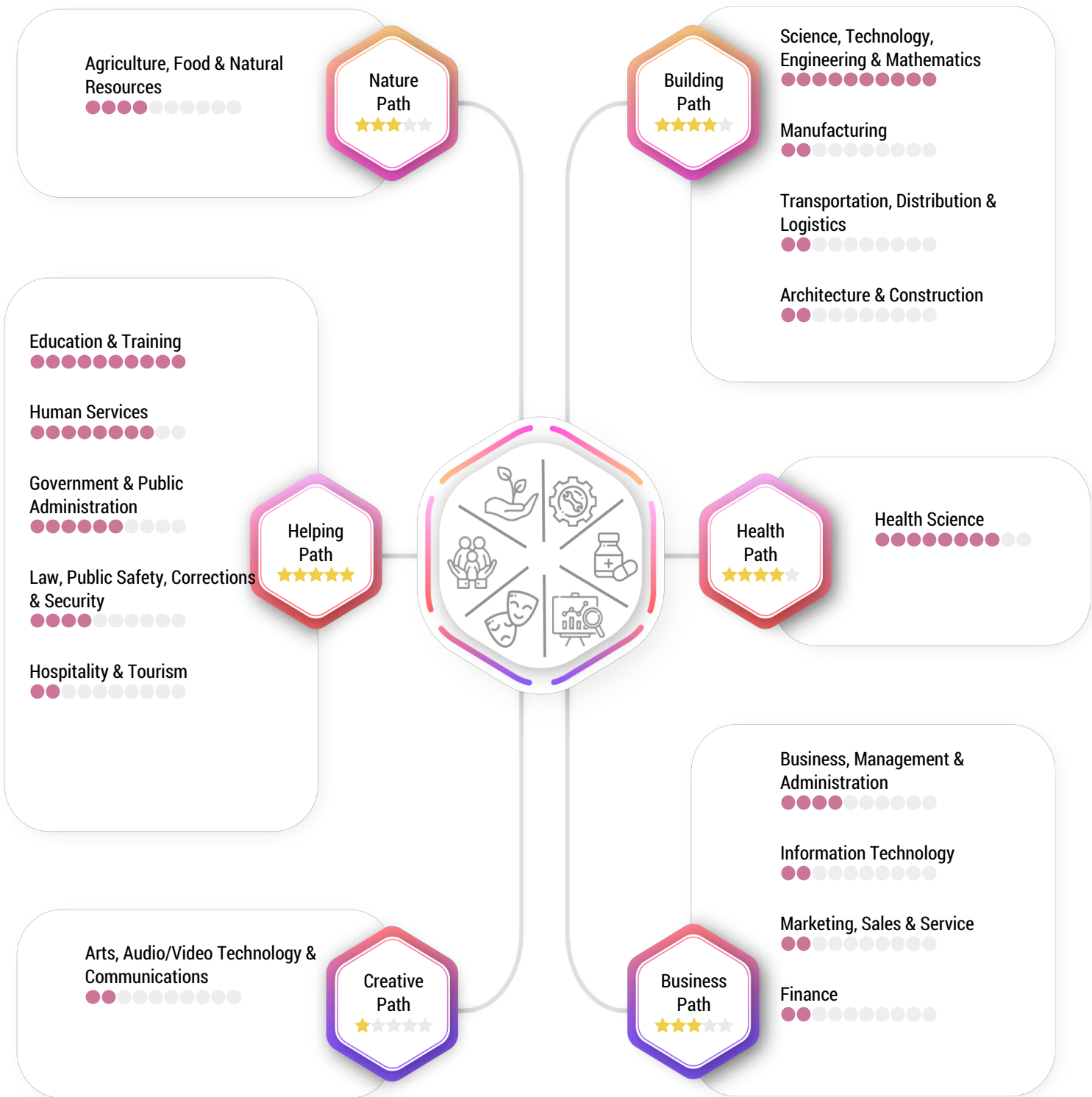
EDUCATIONAL SERVICES



PROFESSIONAL SCIENTIFIC AND TECHNICAL SERVICES

# CAREER PATH RATINGS

The career suggestions made are career paths and clusters which will help you understand your best matches in the world of work.



*“Nothing happens until you decide. Make a Decision and watch your life move forward.”*

*- Oprah*



For any Future guidance Nd clarification contact us



[info@xeedmind.com](mailto:info@xeedmind.com)



87993 57823



[www.xeedmind.com](http://www.xeedmind.com)

